



## SPECIFICATIONS

<b>Model Code :</b>	TGRJ7940PMD20-AM
<b>Model Year :</b>	2020
<b>Body Type :</b>	Single Cabin Pick Up
<b>Axle :</b>	4WD
<b>Displacement :</b>	4.0L
<b>Transmission :</b>	Manual Transmission
<b>Fuel Type :</b>	Petrol
<b>Door :</b>	2 Doors
<b>Seats :</b>	3 Seats
<b>Seat Material :</b>	Fabric
<b>Rim Size/Type :</b>	16"Steel
<b>Temp Control :</b>	Manual
<b>Headlamp :</b>	HALOGEN
<b>Airbag :</b>	D + P
<b>Window Type :</b>	Power
<b>Roof :</b>	Standard



## GRJ79 4.0L Petrol

MANUAL TRANSMISSION W/O WINCH

### TECHNICAL SPECIFICATION

- Engine 4.0 L, V6 6 Cylinder
- Max Power 228 HP/5200 RPM
- Max Torque 360 N.M /3800 RPM
- 5 Speed Manual Transmission
- Coil /Leaf Heavy (11 Leaves)

### INTERIOR

- Audio AM/FM/CD/AUX/USB with Bluetooth
- 2 Speakers
- Leather and Wood Steering Wheel
- Steering Column Tilt
- Wood on Instrument Panel
- Bench Seat
- Air conditioner
- Heater
- Power windows
- Power Door Lock Driver Control
- Airbags for Driver and Passenger
- Cup Holder
- Door Pocket
- Glove Box + Key
- Multi - Display Clock
- Floor Mat



## GRJ79 4.0L Petrol

MANUAL TRANSMISSION W/O WINCH

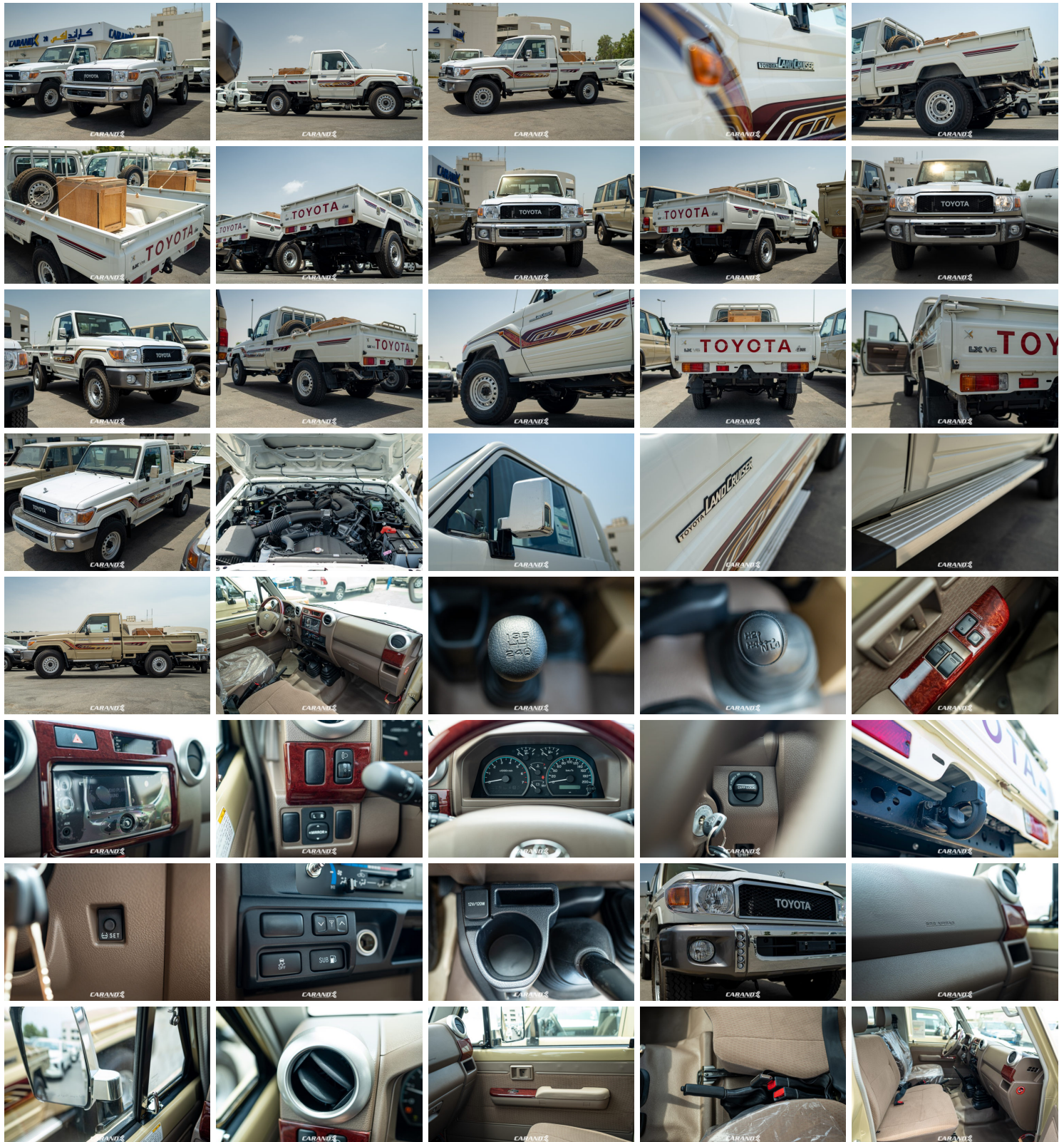
### EXTERIOR

- Body Colored Cladding Panel
- Body Stripe
- Headlamp Leveling
- Daytime Running Light
- Front Fog Lamps
- Front Bumper LED Lights
- Chrome Coloured Door Mirrors
- Wheel Cap Steel
- Tire Size 225/95R16
- Fuel Tank Cap with Key
- Two Fuel Tank Capacity 90 + 90 L
- Towing Hook Front + Rear
- Front and Rear Mud Guards
- Side Step
- Convex Outside Rear View Mirror
- Spare Wheel Carrier Deck front + Lock
- Tail Gate Mark TOYOTA

### SAFETY AND ADDITIONAL FEATURES

- (ABS) Anti-Lock Braking System
- (BA) Brake Assist
- (EBD) Electronic Brake Distribution
- (VSC) Vehicle Stability Control
- (ATRC) Active Traction Control
- (HAC) Hill Start Assist Control
- Fire Extinguisher
- Rear Differential Ratio 4.3
- Wireless Door lock

## GALLERY





# GRJ79 4.0L Petrol

MANUAL TRANSMISSION W/O WINCH

